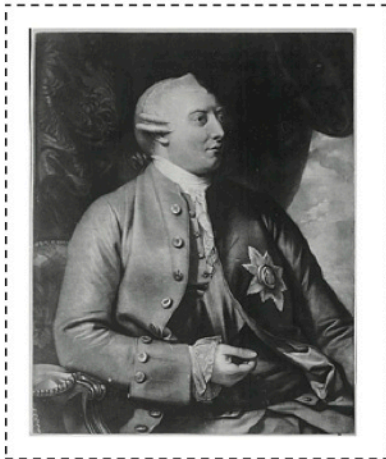


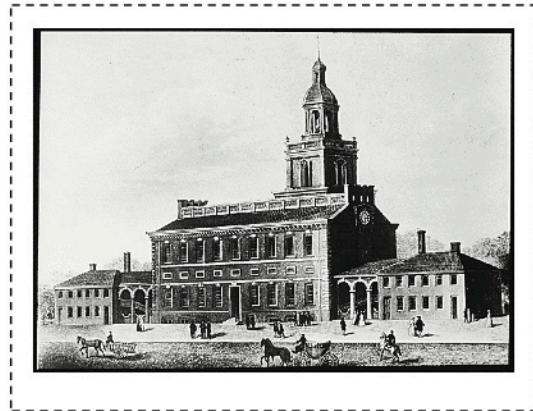
Berrien RESA Constitution Day

Road to the Constitution Timeline

Directions: Think about the documents below and where they belong on the timeline. Cut out the documents and glue them on the timeline.



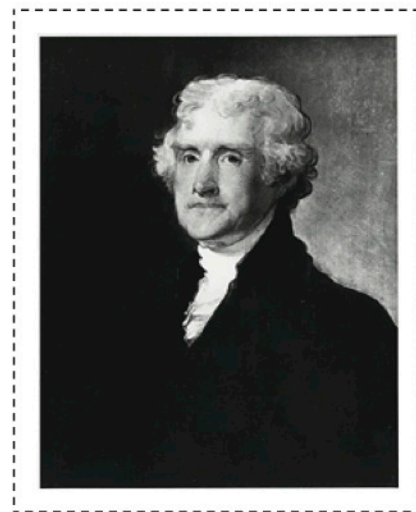
This man ruled England from
1760-1820.



This building is in
Philadelphia.



This document defines the
laws of the United States
of America.



This man drafted the
Declaration of
Independence.